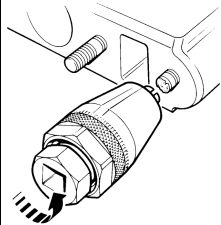


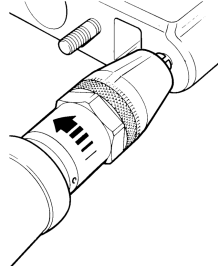
illust.1: KL-0181-1/-3



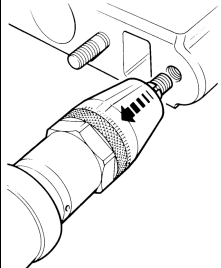
illust.2:



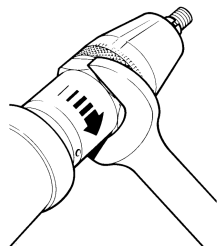
illust.3:



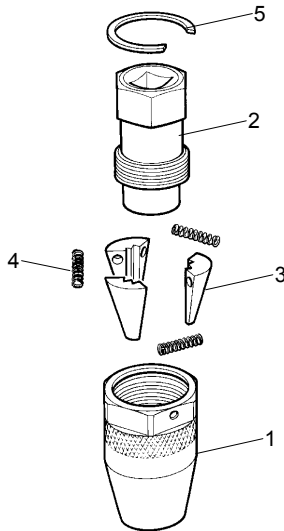
illust.4:



illust.5:



illust.6: Parts List



Pos.	Part No.	Description	Qty
	KL-0181-1	Stud Extractor complete	1
	<i>Consists of:</i>		
1	KL-0181-1001	Housing 36 mm	1
2	KL-0181-1002	Drive Nut 24 mm - 3/8"	1
3	KL-0181-1003	Segment Set (3 pieces)	1
4	KL-0181-1004	Set of Springs (3 pieces)	1
5	KL-0181-1005	Circlip SB 30	1

Pos.	Part No.	Description	Qty
	KL-0181-3	Stud Extractor complete	1
	<i>Consists of:</i>		
1	KL-0181-3001	Housing 36 mm	1
2	KL-0181-3002	Drive Nut 24 mm - 1/2"	1
3	KL-0181-1003	Segment Set (3 pieces)	1
4	KL-0181-1004	Set of Springs (3 pieces)	1
5	KL-0181-1005	Circlip SB 30	1

Application

KL-0181-1/-3 is the first Stud Extractor in the world to combine the ability to extract and insert Studs with diameters between Ø 6 - 12 mm with stepless adjustment, also rated for use with impact tools, and when limited space dictates is also able to be used alone.

The tool consists of a Housing with 36 mm hexagonal drive, in which are a set of 3 Segments. These Segments are infinitely adjustable throughout the range 6 - 12 mm (1/4" to 1/2").

The Segments are adjusted to the required diameter of the Stud by the Drive Nut (24 mm external hexagon) or internal square drive.

The **KL-0181-1/-3 Stud Extractor** is able to be used in confined spaces due to its small size, and will securely grip a minimum length of 3 mm. This allows very short or broken-off Studs to be readily extracted. KL-0181-1 is 3/8" square drive and KL-0181-3 is 1/2" square drive.

Advantages

- Infinitely adjustable between 6 - 12 mm, (1/4" - 1/2").
- Rated for use with Impact Guns.
- Requires only 3mm visible length to extract rusted or corroded Studs.

Technical Data

Housing outer drive	SW 36
Operating drive	SW 24; 3/8" or 1/2" □
Weight	0,42 kg, 15 oz

Warnings and Notes

- Work on drive-line components should only be performed by trained personnel observing safety instructions and procedures issued by the vehicle manufacturer, and using the correct tools.
- The special design of **KL-0181-1/-3** is such that the loosening force acts to further tighten the grip of the Segments onto the Stud. This ensures that the Stud is securely held in the **KL-0181-1/-3**.
- When extracting smaller diameter Studs, ensure that the torque of the impact-gun is turned down.
- Studs which have broken off flush or below the surface may be drilled out using the **KL-0181-5** Universal Drill Guide.
- Lubricate the Segments only with gear-oil e.g. Esso 90.
- Visually inspect the Tool for damage before use.
- Safety goggles should be worn when using impact tools.

Operating Instructions

1. Place the Tool over the Stud to be removed, and tighten the Segments onto the Stud by rotating the Drive Nut anti-clockwise while holding the Housing until the Segments grip the Stud correctly (illust.2).
2. Use an impact-gun or socket to rotate the Drive Nut further anti-clockwise until the Stud is extracted (illust.3 and 4).
3. Release the extracted Stud by holding the Housing and rotating the Drive Nut in a clockwise direction. (illust.5).
4. To insert a new Stud, first grip the Stud in the Tool as above, and then tighten the Stud by using a 36 mm spanner or socket on the Housing outer hexagonal drive.